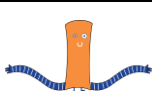


## WEEKLY NEWS

<https://www.glebeprimary.co.uk>



**Our Nurture, Inspire and Challenge characters.**



### School Motto:

*We nurture and inspire others and challenge ourselves. Be brave, be kind and seize the day!*



*Due to Christmas shows, no star assembly this week!*

### House Points

Arundel	Bramber	Lewes	Pevensey
1284	1346	1279	1327

### Head teacher message

Dear parents and carers,  
Thank you to the Y1 & Y2 and Nursery & YR children for their joyous Christmas shows! Thank you to the staff team also for their wonderful work in putting it all together. ★

Christmas Dinner Day was great and thanks to Kayleigh, our Chef, and her wonderful kitchen team! Thank you to the whole staff team and the children for helping us to organise the day and for making it fun and cheerful, as always! We are grateful to The Pantry team for the crackers for the children. Festive jumpers all round too!

Nursery and YR children went to post some important Christmas letters on Wednesday. They were very sensible and always a fun activity! Thank you to Y5 as well who have been to visit Glebelands Care Home to sing carols this week. Very kind Y5! Thank you to the house Captains and School Council for their NIC values Christmas assembly for the children this week. ★

Mrs. Peace, Miss, Williams, Miss. Jackson and I have been visiting classrooms and there is so much learning progress to celebrate all round! Thank you to the staff team for their tremendous work in helping all the children to try their best and to shine. Every child was happy to share their learning with us and to show us what they were proud of. Our teachers and teaching assistant colleagues work as a team to ensure consistency regarding what they are teaching and there

is constant dialogue between colleagues to learn from each other and to give the children engaging tasks and learning pitched at just the right level. Thank you to the Glebe team for their dedication and care.

The last week of Autumn term approaching and we have Christmas crafts and festive activities to look forward to. Thank you to the PTA for supporting us with funds for teachers to buy some extra sparkly craft things for Christmas activities. Much appreciated by all!

Please check the Reindeer Day arrangements over the page.

Best wishes

Mrs. Crutchfield

Head teacher

### School Meals DFE trial

We have been taking part in a DFE trial of new draft food standards the government are proposing for school lunches. This trial will be over at Christmas and then meals will return to how they were before. The trial involved removing overly processed food from the menu e.g. cheese, sausages and ham. There have also been no sweet puddings during the trial except yoghurts and fruit. There has been more variety of fruit on offer however. Our salad bar and all the usual favourites have kept going but with no cheese, ham or sausages. The data from the trial is interesting as the roast days, fish and fish & chips days have still been popular. Our former meals are coming back in January but the trial has given our caterers some interesting reflections to feed back to the DFE. Thank you to the children for taking part. The cheese and ham were missed! The Pantry are advising a more sensible approach to any changes being gradual as part of their work with the DFE. The Pantry have asked us to thank families and children for being a trial school for the country.



### Support for Parents and Carers

The Health and Wellbeing Page on the Glebe website.

<https://www.glebeprimary.co.uk/parents-carers/health-and-wellbeing>

Useful Tik Tok advice for parents on our school website:

<https://www.glebeprimary.co.uk/parents-carers/e-safety>

### Y4 An animal experience to remember!

Thanks to parent contributions and PTA support the Y4 teachers were able to arrange a fabulous visit from Reptylers to enrich our learning about

different animal classifications and habitats. An experience they won't forget!



Mrs. Fox & Mrs. Fitzgerald

#### Events:

Tuesday 16<sup>th</sup> December 2.15pm Y5 Carols in Old Hall for their parents/carers.

**Thursday 18<sup>th</sup> December Reindeer Day!** - Non Uniform Day, wear a festive jumper and Headband antlers will be offered to all children and reindeer food- no charge! In return we ask for donations to Chestnut Tree House Children's Hospice.

**Thursday 18<sup>th</sup> 2.30pm Y4 and their parents joining us to plant a tree and daffodils in memory of Charlie Watson. Any other parents who are friends of the family are very welcome to join us.**

**Christmas hol's for children: Thurs 18<sup>th</sup> December 2025**  
**Spring Term 1**

**Spring term starts for children: Tues 6th Jan 2026**

Y4 swimming 8/1 to 12/2

The Outdoor Project Friday Club Y1 to Y6 16/1 to 27/3.

Tuesday 27<sup>th</sup> Jan M&M Productions: Beauty & the Beast Panto for all children (we always ask for contributions to support the cost nearer the time).

Thursday 5<sup>th</sup> Feb Y5 Magnolia assembly for parents- 8.45 sports hall

Friday 6<sup>th</sup> February- whole school Science afternoon.

w/o 9<sup>th</sup> Feb Parent Meeting Week

Tuesday 10<sup>th</sup> Feb Safer Internet Day

Wednesday 11<sup>th</sup> Feb Y5 Safety Online workshop with Police Youth team.

Thursday 12<sup>th</sup> Feb Non-uniform day for donations towards extra playtime equipment (please donate online- no cash)

**Half term for children: Thursday 12th Feb 2026**

**Spring Term 2**

**Back to school for all: Mon 23<sup>rd</sup> Feb 2026**

Y2 swimming 26/2 to 2/4

Wednesday 25<sup>th</sup> Feb Young Voices Choir perform at the O2 in London.

Monday 2<sup>nd</sup> March YR to the Southwick Library

Thursday 5<sup>th</sup> March 3Lime class assembly for parents- 8.345 sports hall.

Friday 6<sup>th</sup> March- Glebe's World Book Day

Thurs 12<sup>th</sup> March Y1 assembly for parents- 8.45 sports hall

Friday 27<sup>th</sup> March Non-uniform day for donations towards extra playtime equipment (please donate online- no cash)  
Y3 to Y6 decorate an Easter Egg competition- all entries to classrooms.

Nursery to Y2 Easter Bonnet/hat day- wear a decorative hat to school- parade 8.45am.

PTA provide a prize for both events for each class.

**Easter hol's for children: Fri 27<sup>th</sup> March 2026**

**Summer term 1**

**Summer term for all: Monday 13<sup>th</sup> April 2026**

Y5 swimming 16/4 to 21/5

**Half term for children: Thursday 22nd May 2026**

**Summer Term 2**

**Back to school for all: Mon 1<sup>st</sup> June 2026**

**Summer hol's for children: Fri 17th July 2026**



#### Morning Snack Reminder



Children in Nursery to Y2 have free fresh fruit or veg provided (government provision for schools) and children from Y3 to Y6 are able to bring fresh fruit/fresh veg in for their morning snack. We can provide fruit if children forget theirs. There are no other snacks please unless children have agreed dietary plans.



Ho! Ho! Ho!



We're excited to let you know that on Thursday 18<sup>th</sup> December 2025, we'll be holding a Reindeer Fun Day to raise funds for Southern Hospice Group (Chestnut Tree House) — a wonderful charity that provides vital care and support to children and families.

To help us celebrate, children are invited to wear a festive jumper, and we'll be providing free antlers for them to wear during the day. Each child will also receive a packet of reindeer food to sprinkle outside on Christmas Eve — a little festive magic to take home!

If you'd like to support our fundraising efforts, donations can be made via our JustGiving

page: [https://www.justgiving.com/page/casey-groves-1?utm\\_medium=FR&utm\\_source=EM](https://www.justgiving.com/page/casey-groves-1?utm_medium=FR&utm_source=EM)

Donating through JustGiving is quick, secure, and efficient. Your contribution goes directly to the charity, and if you're a UK taxpayer, Gift Aid is automatically reclaimed — making your donation go even further.

Thank you so much for your support. Every donation helps make a real difference.

Warm wishes,

The Glebe Team

#### Request for Help

**Children's winter coats and nearly new school shoes**

**We would appreciate donations of warm winter coats for children and nearly new black school shoes for anyone who needs them. If your child has grown out of their school shoes fast and they are still in good condition, please bring them in for us to give to others. If you are thinking of buying a new winter coat, please consider donating the one your child has grown out of (waterproof and warm please).**

♥ Thankyou (clothes rails and shoe stand for donations in the office entrance)

